

Facing West - Solo

by Pat Metheny

Transcr. by C. Wikdahl

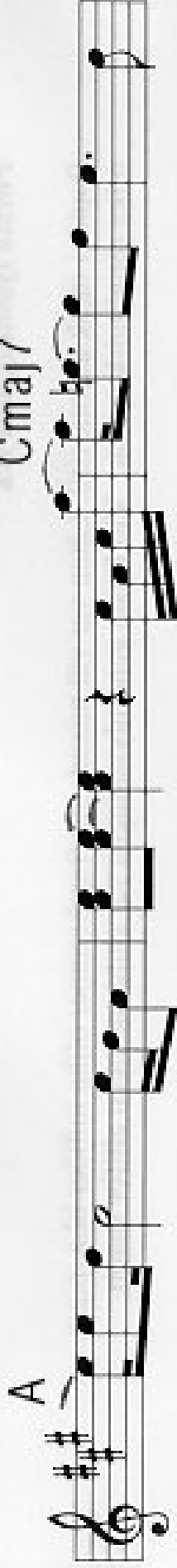
Chord symbols and musical notation details:

- Staff 1: *E*_{sus}, *A*
- Staff 2: *C*_{maj}
- Staff 3: *A*, *F*_{#m}⁷
- Staff 4: *D*_{8va}, *E*, *A*, *F*_{#m}⁷
- Staff 5: *D*, *E*_{sus}
- Staff 6: *E*_{add}⁹, *E*_{sus}/*D*
- Staff 7: *E*_{add}⁹/*C*_#, *F*_{#m}⁷, *C*_{#m}⁷
- Staff 8: *F*_{#m}⁷, *B*_m⁷
- Staff 9: *E*_m⁷, *A*, *B*_m⁷, *F*_{#m}⁷
- Staff 10: *E*

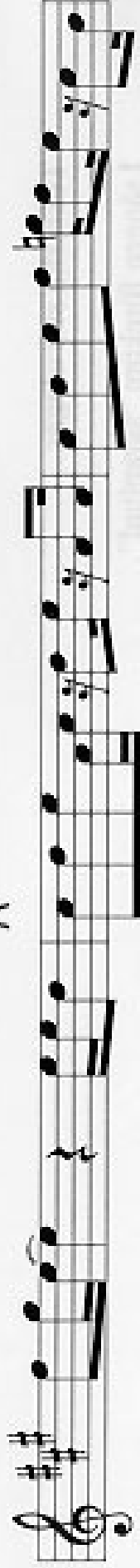
D 8:va



Cmaj7



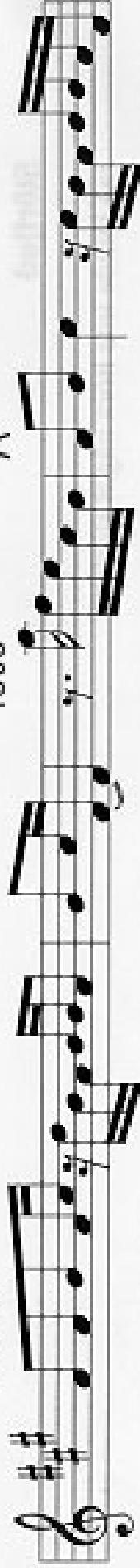
A



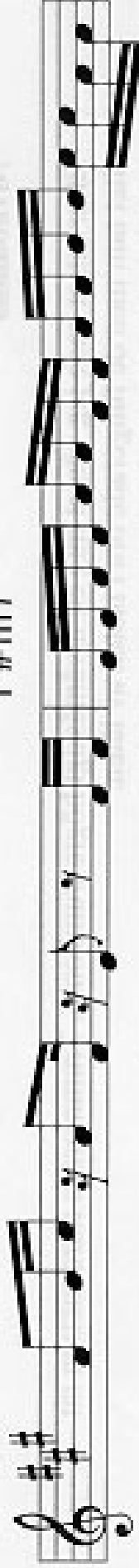
F#m7

loco

A



F#m7



8:va

C

